

Rapid and Differential Proliferation of the Ty3-Gypsy LTR Retrotransposon *Atlantys* in the Genus *Oryza*

Andrea Zuccolo · Jetty S. S. Ammiraju · HyeRan Kim ·
Abhijit Sanyal · Scott Jackson · Rod A. Wing

Received: 16 January 2008 / Accepted: 20 May 2008 / Published online: 15 August 2008
© Springer Science + Business Media, LLC 2008

Abstract Here, we present the results of a comprehensive study of the distribution, evolution, heterogeneity, and phylogenetic relationships of the Ty3-Gypsy *Atlantys* long terminal repeat retrotransposable element family in *Oryza*. *Atlantys* element-related sequences make up a significant fraction of the genomes of species from the *Officinalis* complex as well as the *Oryza ridleyi* and *O. granulata* genomes. The proliferation of *Atlantys* elements, in many cases, took place after respective speciation events occurred. Most of the retrotranspositional events occurred within the last three million years. *Atlantys* is an ancient and ubiquitous component of the genus *Oryza* and has made significant contributions to genome size variation across the genus. Its structure is unusual when compared to other Ty3-Gypsy elements and its proliferation in the different *Oryza* species has been rapid and differential.

Keywords Ty3-gypsy · LTR retrotransposon · *Oryza* · *Officinalis* complex · Genome size

Introduction

Repetitive sequences play significant roles in the evolution of genome architecture, gene expression, and speciation. The largest fraction of repetitive sequences in most plant genomes is composed of transposable elements [11] that are classified into two main major categories: class 1 RNA elements and class 2 or DNA elements, based on the kind of molecules used as intermediates in the replicative mechanism of transposition [7]. Long terminal repeat (LTR) retrotransposons, (LTR-RTs), a particular group of class 1 elements, are ubiquitous in plants [12, 18, 45, 53]. The biology of retrotransposition, whereby identical LTRs are found at the ends of retrotransposons after transposition, makes long terminal repeat sequences ideal molecular signatures for understanding the timing of LTR-RT insertion, for understanding the mechanisms of LTR-RT elimination, and for the determining the phylogenetic relationships of LTR-RT families.

Several studies have shown that LTR-RTs are the principal components responsible for genome size expansion in the grasses, accounting for as much as 50–90% of the barley, maize, and wheat genomes [29, 35, 42, 46, 47]. The spectacular effects of retrotranspositional bursts of single LTR-RT families on the genome size variation have been recently described in *Gossypium* ssp., *Oryza* var., and *Vicia pannonica* [3, 17, 36, 39]. For example, both the *Oryza australiensis* [EE] and *O. granulata* [GG] diploid genomes increased by 100% and 50%, respectively, by bursts of a few LTR-RTs families in a relatively short periods of time, subsequent to speciation.

A. Zuccolo · J. S. S. Ammiraju · H. Kim · R. A. Wing (✉)
Arizona Genomics Institute, Department of Plant Sciences,
BIO5 Institute, University of Arizona,
Tucson, AZ 85721, USA
e-mail: rwing@ag.arizona.edu

A. Zuccolo
e-mail: azuccolo@ag.arizona.edu

J. S. S. Ammiraju
e-mail: jettyr@ag.arizona.edu

H. Kim
e-mail: hkim@ag.arizona.edu

A. Sanyal · S. Jackson
Agricultural Genomics, Purdue University,
West Lafayette, IN 47907, USA

A. Sanyal
e-mail: asanyal@purdue.edu

S. Jackson
e-mail: sjackson@purdue.edu

LTR-RTs can also act as potential controlling elements. Through insertion, they can inactivate or modify genes [27, 49] and can also have genome wide effects contributing to transcriptional interference by producing sense or antisense transcripts of adjacent genes [22]. Retrotransposon activity has been reported in plants for some LTR-RTs such as *Tnt1* in tobacco [16], *BARE-1* in barley [46, 47], *Tos10*, *Tos17*, and *Tos19* elements in rice [19] and *OGRE* in *V. pannonica* [37].

The genus *Oryza* is composed of 24 species comprising [26, 50] 10 distinct genome types (six diploid; four tetraploid) and having a 3.6-fold genome size variation. Two species are cultivated with *O. sativa* being the most important food crop in the world. The relevance of rice as staple food resource, its compact genome, and role as a “model” species for the genomic studies of cereals [14] have spawned massive research efforts that have led to the production of an extensive set of structural and functional genomics information, including two draft genomic sequences of the *O. sativa* subspecies *indica* and *japonica* [15, 56] as well as a high quality finished sequence of the *japonica* genome [20]. We are using a whole genus approach to study the genus *Oryza* and have established an experimental research platform composed of 12 bacterial artificial chromosome (BAC) fingerprint/end sequence physical maps of the 10 genome types aligned to the rice reference genome sequence (www.omap.org) [55], as well as an unbiased set of genomic sequences derived from random sheared shotgun libraries [57], to address fundamental questions in plant evolution and biology. Using this platform, we previously described the discovery and analysis of several retrotranspositional bursts that have led to large increases in the genome sizes of both the EE (*O.*

australiensis) and GG (*O. granulata*) genome species [3, 39]. Here, we present the results of a comprehensive study of the Ty3-*Gypsy Atlantys* [21] element in the genus *Oryza*. We explored the distribution, evolution, heterogeneity, and phylogenetic relationships of the *Atlantys* element both within and between the *Oryza* species using three different sets of data. First, 27 BACs representative of 11 *Oryza* species were used to isolate complete *Atlantys* elements and LTRs. Secondly, more than 72,000 random sheared sequences representative of 12 *Oryza* species were used in abundance estimates and phylogenetic analyses. Finally, the complete genomic sequences of both the *indica* and *japonica* subspecies of *O. sativa* were used to complement and validate the results on a whole genome scale.

Results

Atlantys is ubiquitous in the genus *Oryza*

The Ty3-*Gypsy Atlantys* element was first identified in *O. sativa* by McCarthy and co-workers [33] as part of an extensive survey to identify and classify LTR-RTs in rice. To isolate and analyze *Atlantys* elements and LTRs from other *Oryza* species, a sample of 27 sequenced BACs (totaling more than 4.2 Mbp of sequence) from 11 different *Oryza* species was searched using LTR sequences from two *O. sativa Atlantys* elements (Table 1) as query in nucleotide Basic Local Alignment Sequence Tool (BlastN) searches under relaxed settings. Complete elements from *O. punctata* [BB], *O. granulata* [GG], and *O. alta* [CCDD] and a nearly complete (because of a truncated 5' LTR) element from *O. officinalis* [CC] were identified. The length of

Table 1 General Features of *Oryza Atlantys* Elements

Species	Length	LTR5	LTR3	Insertion time	TSD	Accession number
<i>O. sativa japonica</i>	13,728	1–1512	12215–13728	0.93	CCTGG	AP008212.1 (17105002–17118729)
<i>O. sativa indica</i>	13,472	1–1513	11959–13472	0.76	GATTG	CM000136 (18570076–18583547)
<i>O. alta</i>	13,828	1–1746	12046–13828	0.45	GTAAT	EU257654
<i>O. alta</i> (solo-LTR)	1,833	–	–	–	GCCGG	EU257662
<i>O. officinalis</i>	11,921	1–1198 (T)	10735–11921	0.75	n/a	EU257656
<i>O. punctata</i>	12,999	1–1524	11470–12999	0.55	GCAGT	EU257657
<i>O. granulata</i>	11,226	1–1338	9889–11226	0.99	GGCTG	EU257655
<i>O. australiensis</i> (solo-LTR)	1,457	–	–	–	GCGGC	EU257663
<i>O. glaberrima</i> (joined-LTR)	1,515	–	–	–	–	EU257659
<i>O. nivara</i> (joined-LTR)	1,514	–	–	–	–	EU257660
<i>O. rufipogon</i> (joined-LTR)	1,502	–	–	–	–	EU257661
<i>O. minuta</i> (solo-LTR)	1,490	–	–	–	GTCAT	EU257658
<i>O. ridleyi</i> (solo-LTR)	1,299	–	–	–	GTATG	EU257664

For *O. sativa* elements, the coordinates of the *Atlantys* elements used are provided along with the accession number of the pseudomolecule. Length—length of the complete element in bp; LTR 3' and LTR 5'—their coordinates in the complete elements are indicated; insertion time—this is the estimate in million years; TSD—sequence of the target site duplication
n/a Not available, T truncated, TSD target site duplication

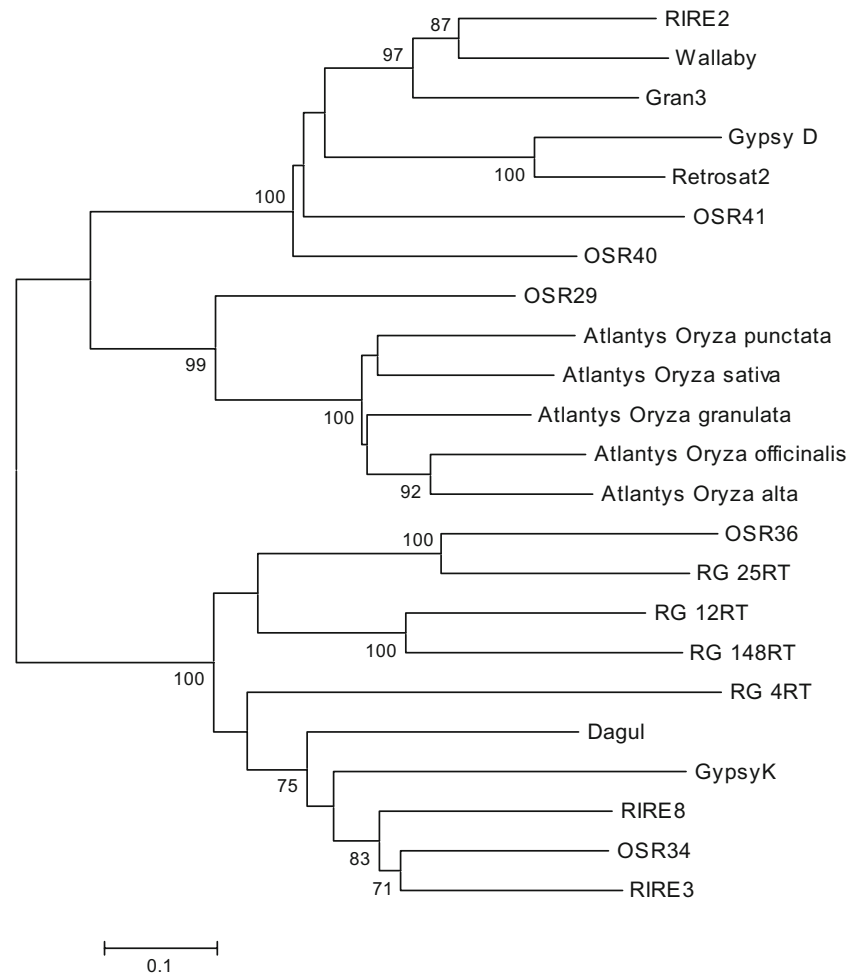


Fig. 1 Neighbor-joining tree generated from RT domains of the most abundant Ty3-Gypsy elements from *O. sativa* and *Atlantys* elements from *Oryza* genus. Reverse transcriptase sequences from complete

Atlantys elements isolated and from the most important rice LTR retrotransposons were used to build a neighbor-joining phylogenetic tree. Bootstrap values were calculated for 1,000 replicates.

these elements ranged from 11,226 bp in *O. granulata* to the 13,728 bp in *O. sativa* subspecies japonica. These elements were classified as members of the *Atlantys* family because of their reciprocal LTR similarity and the topology of a neighbor-joining (NJ) phylogenetic tree made using conserved reverse transcriptase (RT) coding domains of the isolated elements and homologous sequences of several other *O. sativa* Ty3-Gypsy elements. All the RT domains of the putative *Atlantys* elements clustered with the *O. sativa* *Atlantys* sequence in a single clade with a support of 100% bootstrap replicates (Fig. 1). Furthermore, the structure of the complete *Atlantys*-like elements (Fig. 2) was conserved across the various species including an unusual third partial open reading frame (ORF) located close to the 3' LTR on the opposite strand, with respect to the gag_pol coding region. This partial ORF encodes a putative protein with sequence similarity to an “amminotransferase-like” protein from *O. sativa*. However, this ORF, as with all the other *Atlantys* coding domains, contained several stop codons

and frameshift mutations. Other canonical features of LTR retroelements such as the primer binding site (PBS) and the polypurinic tract (PPT) appeared to be highly conserved in the various *Atlantys* elements. Fifteen of 18 nucleotides (all except the terminal 5'-CCA-3') of the *Atlantys* PBS are complementary to the 3' end of the tRNA_{Arg} isolated in *Arabidopsis thaliana* [30], whereas the putative polypurinic tract showed few pyrimidines interrupting the long stretch of purines (Fig. 2).

Atlantys solo-LTRs were found in *O. alta* [CCDD], *O. australiensis* [EE], *O. minuta* [BBCC], and *O. ridleyi* [HHJJ] (one for each BAC). To isolate additional *Atlantys* LTRs from the wild relatives of rice, LTR sequences from the *O. sativa* *Atlantys* element were used as queries in similarity searches against a set of random sheared *Oryza* sequences (Table 2) generated from a previous project [57], which enabled us to reconstruct putative *Atlantys* LTRs for *O. glaberrima* [AA], *O. nivara* [AA], and *O. rufipogon* [AA]. Overall, we obtained 18 *Atlantys* LTRs from

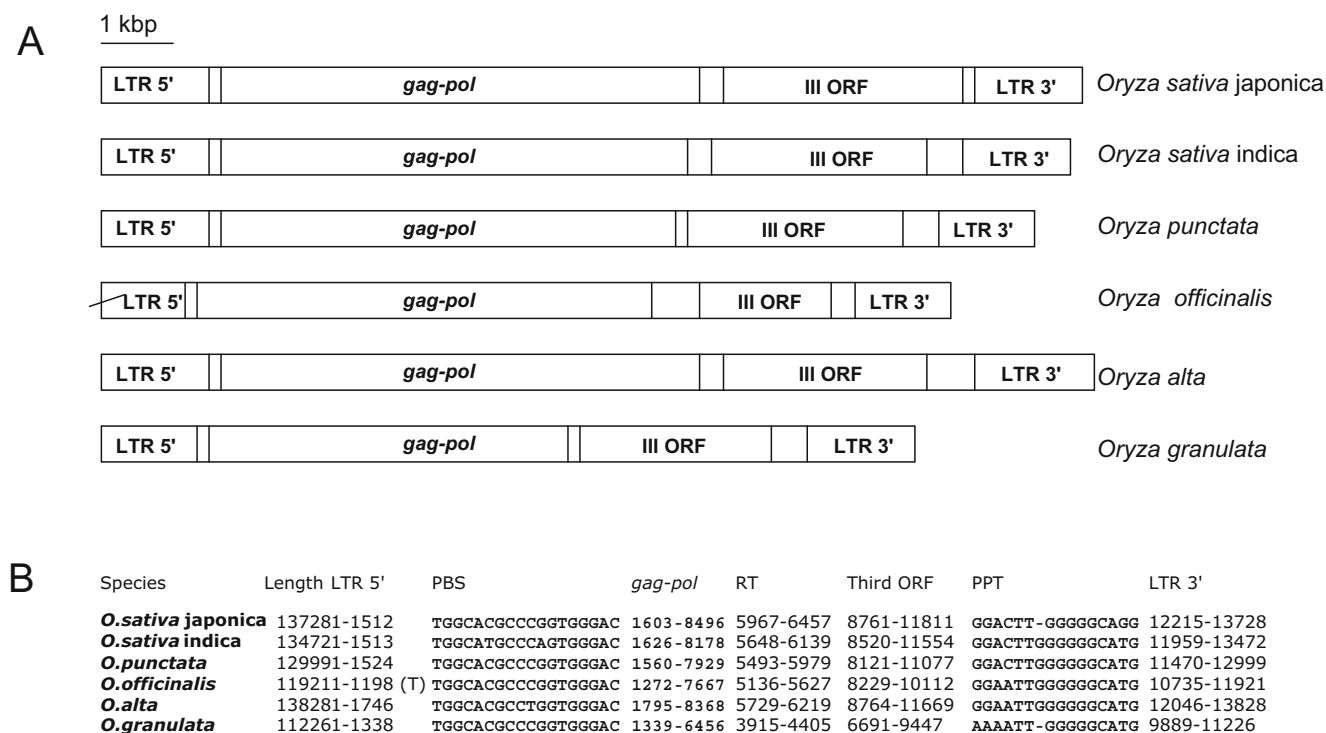


Fig. 2 Detailed structural features of complete *Atlantys* elements. **A** Graphical overview. **B** Detailed coordinates of the *Atlantys* regions. *LTR* Long terminal repeat, *gag-pol* the coordinates correspond to the region homologues to the *gag-pol* sequence ABA95102, *RT* indicates

the coordinates of the reverse transcriptase domains used in this study, *PBS* primer binding site, *PPT* polypurine tract, *Third ORF* refers to the coding domains isolated in the opposite strand of that coding for *gag-pol* and homologous to the sequence AAV43983.

complete elements (10 LTRs), solo LTRs (four), truncated elements (one), and joined random sheared sequences (three). The length of the complete LTRs isolated ranged from 1,299 bp (in *O. ridleyi*) to 1,833 bp (solo-LTR in *O. alta*; Table 1). Their overall similarity when compared to the LTR of *O. sativa Atlantys* ranged from 87.1% (*O. nivara Atlantys*) to 50.7% (*O. granulata Atlantys*).

Dramatic abundance variation of *Atlantys* elements in the *Oryza*

We estimated the abundance of *Atlantys* elements in the *Oryza* in three ways. First, we determined the number of *Atlantys* elements (complete, truncated, and solo LTRs) in the genome sequences of both japonica and indica rice using LTRs as the query sequence in similarity searches. Only hits longer than 90% of the query length were taken into account. In the case of *O. sativa* ssp. indica, a total of 501 *Atlantys* LTRs were identified, of which 70 belonged to 35 complete elements (a complete element is constituted by the two LTRs plus the internal coding domains), 164 were part of truncated elements (because one LTR was missing and the remaining had close to its ends PBS or PPT or the integrase Ty3-*Gypsy* conserved domain), 182 were solo-LTR originated by intra-element recombination (all showed the canonical 5 bp long target site duplication (TSD)), and

85 LTRs were not classified because no significant signals such as PBS or PPT or TSD were found in their proximity. The latter ones could be solo-LTRs originating from inter-element unequal recombination or they could be part of highly rearranged and incomplete elements. In japonica rice, 529 complete LTRs were identified, 102 from 51 complete retroelements, 166 from truncated elements, 162 are solo-LTRs, and 99 unclassified. Considering only complete elements and solo-LTRs showing TSD, the ratio of complete elements versus solo-LTRs in indica and japonica rice was roughly 1:5 and 1:3, respectively. It should, however, be noted that the reliability of the ratio calculated in *indica* is questionable since the sequence used to estimate this is yet to be completed. Since the settings used in the search were extremely stringent (all the instances shorter than 90% of the query length were discarded), these figures are an underestimate of the actual amount of LTR *Atlantys* related sequences in *O. sativa*. A BlastN search collecting all the hits having significant similarity (*e*-value lower than $1e-10$) with the *Atlantys* LTRs gave much higher figures—1,892 hits in *O. sativa* ssp. japonica and 1,945 in *O. sativa* ssp. indica.

Second, to estimate the abundance of *Atlantys* elements in the remaining species, we used *Atlantys* LTRs as queries in similarity searches against sequences derived from a set of random sheared small insert shotgun libraries generated

Table 2 *Oryza* Random Sheared Library Statistics

Species	Genome type	Genome size (in MBp)	Nr. of sequences	Reads mean length	Mbp sequenced	% genome sequenced
<i>O. nivara</i>	AA	448	3,103	657	2.04	0.46
<i>O. rufipogon</i>	AA	439	2,555	751	1.92	0.44
<i>O. glaberrima</i>	AA	357	3,494	767	2.68	0.75
<i>O. punctata</i>	BB	425	3,144	613	1.93	0.45
<i>O. officinalis</i>	CC	651	4,848	792	3.84	0.59
<i>O. minuta</i>	BBCC	1124	9,459	760	7.19	0.64
<i>O. alta</i>	CCDD	1008	7,538	758	5.58	0.55
<i>O. australiensis</i>	EE	965	7,359	636	4.68	0.48
<i>O. brachyantha</i>	FF	362	3,377	705	2.38	0.66
<i>O. granulata</i>	GG	882	6,688	665	4.45	0.5
<i>O. ridleyi</i>	HHJJ	1283	11,091	720	8.16	0.64
<i>O. coarctata</i>	HHKK	1283*	9,524	736	6.86	0.53

All genome size estimates are from [2] except those of *O. glaberrima* [AA] and *O. minuta* [GG] which are from [32]. The genome size for *O. coarctata* [HHKK] is a rough estimate because the real genome size of this species is unknown. We, therefore, used the value estimated for *O. ridleyi* [HHJJ; 1,283 Mbp], which is also an allotetraploid species and shares the HH genome type with *O. coarctata*.

from the 12 *Oryza* species under investigation (Table 2). We considered both the number of significant hits (all those with an *e*-value lower than $1e-10$ in BlastN searches) and the amount of nucleotides masked (as was obtained from RepeatMasker analysis (www.repeatmasker.org)). The results of this analysis showed that in all cases, *Atlantys* seemed to be significantly more abundant in the *Officinalis* complex (BB, CC, BBCC, CCDD, and EE genomes) [48] than in the AA genomes. In *O. alta* [CCDD], *O. australiensis* [EE], *O. minuta* [BBCC], and *O. officinalis* [CC], 4.62%, 3.31%, 3.31%, and 3.47% of the bases searched were masked, respectively. A significant amount of masked bases were also found in *O. punctata* [BB]

(2.48%) and *O. granulata* [GG] (2.45%). In contrast to species of the *Officinalis* complex, *Atlantys* appeared to be depleted in the AA genomes (0.86% in *O. nivara*, 0.85% in *O. rufipogon*, and 0.79% in *O. glaberrima*) as well as in the [FF] genome of *O. brachyantha* (0.33%; Table 3).

We estimated the copy number of *Atlantys* LTR-related sequences in each of the 12 *Oryza* genomes using the results of BlastN searches and the method proposed by Hawkins et al. [17]. Surprisingly, the estimated number of *Atlantys* LTR-related sequences in several genomes was well above 10,000 copies: *O. officinalis*—16,293; *O. coarctata*—11,500; *O. granulata*—18,578; *O. minuta*—28,055; *O. australiensis*—22,583, *O. alta*—26,466; and *O.*

Table 3 Abundance of *Atlantys* Elements in the *Oryza*

Species	# hits	Estimated LTRs copy #	% RS	Complete	s-LTRs	Mbp	% genome
<i>O. rufipogon</i>	33	2762	0.85	460	1842	8743000	1.99
<i>O. nivara</i>	33	2417	0.86	403	1611	7655500	1.71
<i>O. glaberrima</i>	43	2110	0.79	352	1406	6685000	1.87
<i>O. punctata</i>	114	7956	2.48	1326	5304	25194000	5.93
<i>O. officinalis</i>	244	16293	3.47	2716	10861	51599500	7.93
<i>O. minuta</i>	484	28055	3.31	4676	18703	88842500	7.90
<i>O. alta</i>	456	26466	4.62	4411	17644	83809000	8.31
<i>O. australiensis</i>	326	22583	3.31	3764	15055	71514500	7.41
<i>O. brachyantha</i>	11	579	0.33	97	385	1838500	0.51
<i>O. granulata</i>	254	18578	2.45	3096	12386	58827000	6.67
<i>O. coarctata</i>	175	11500	1.25	1917	7666	36420000	2.84
<i>O. ridleyi</i>	332	20929	1.95	3488	13953	66273500	5.17
<i>O. sativa</i>	22	1426	-	285	856	4989000	1.28

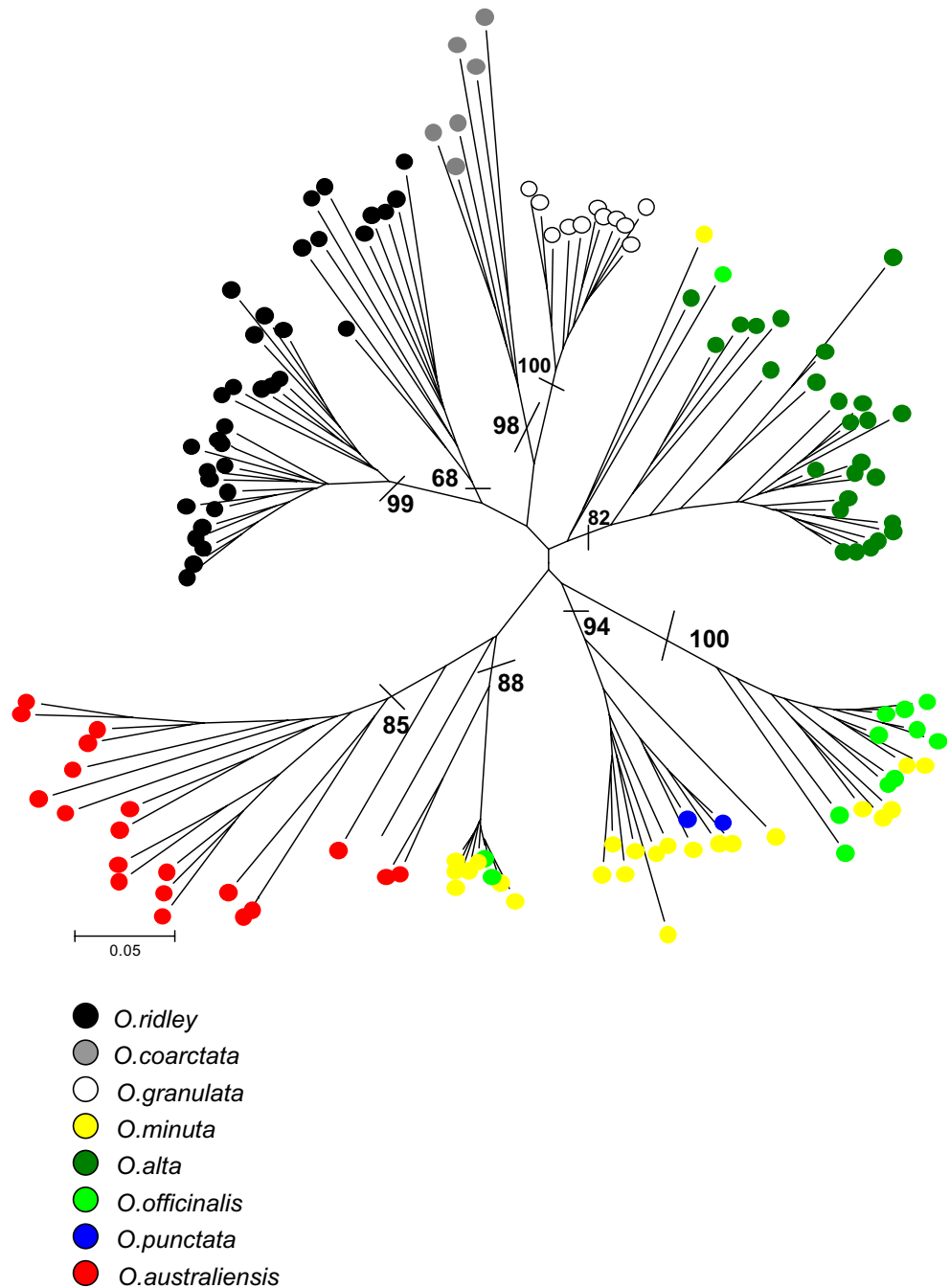
hits is the number of significant hits obtained in BlastN searches using the LTRs as queries; “Estimated LTRs copy #” is the estimated copy number of *Atlantys* LTRs in that genome when the equation proposed by Hawkins et al. [17] was used; “% RS” is the percentage of base pairs in each random sheared library when *Atlantys* LTRs were used in a RepeatMasker search; “Complete” is the estimated number of complete *Atlantys* element in that genome (see text for details); “s-LTRs” is the estimated number of *Atlantys* solo-LTRs in that genome (see text for details); “Mbp” is the amount of complete and s-LTRs was translated into Mbp (see text for details); “% Genome” is the estimated percentage of each genome constituted by *Atlantys* elements. Values for *O. sativa* refer to the average of 10 samples of 3,000 pseudorandom sequences each generated from the *O. sativa* var. japonica complete genome sequence [20]

ridleyi—20,929 (Table 3). The reliability of this approach was confirmed by analyzing 10 sets of 3,000 *O. sativa* in silico random sheared sequences each. The 22 significant hits obtained on average, translated into 1,426 predicted instances for *O. sativa japonica* which is in good agreement with the 1,892 hits obtained when the complete *Oryza* genome, was scanned using BlastN (Table 3).

Finally, to approximate the total genomic contribution of *Atlantys* related sequences to the *Oryza* genus, we assumed that the ratio of complete elements to solo LTRs was 1:3, as previously calculated for *O. sativa* var. *japonica* (we did not

use the ratio calculated for *O. sativa* var. *indica* sequence because we consider the map-based *O. sativa* var. *japonica* sequence more reliable) and that the *Atlantys* element and LTR sizes were 13,000 and 1,500 bp, respectively. When these assumptions are applied to the rice RefSeq, we obtained a figure of 4.99 Mb which is about 6% lower than number of bases actually masked using RepeatMasker (5.32 Mbp). Under these assumptions, we calculated that over 8.31%, 7.90%, 7.93%, 5.93%, and 7.41% of the *O. alta*, *O. minuta*, *O. officinalis*, *O. punctata*, and *O. australiensis* genomes are composed of *Atlantys*-related

Fig. 3 *Atlantys* retrotransposons RT neighbor-joining tree. One hundred thirty-seven sequences similar to the *Atlantys* reverse transcriptase were used to build a phylogenetic tree using the neighbor-joining method. Bootstrap values were calculated for 1,000 replicates, only bootstrap values greater than 50 are reported.



sequences, respectively. Furthermore, *Atlantys*-related elements also appeared to make up a considerable portion of the *O. ridleyi* and *O. granulata* genomes, approximately 66.3 Mbp and 58.8 Mbp, respectively (Table 3).

Combined, these results suggest that the *Atlantys* transposable element family is significantly responsible for genome size increase in many of the *Oryza* genomes studied in this work and especially in those belonging to the *Officinalis* complex.

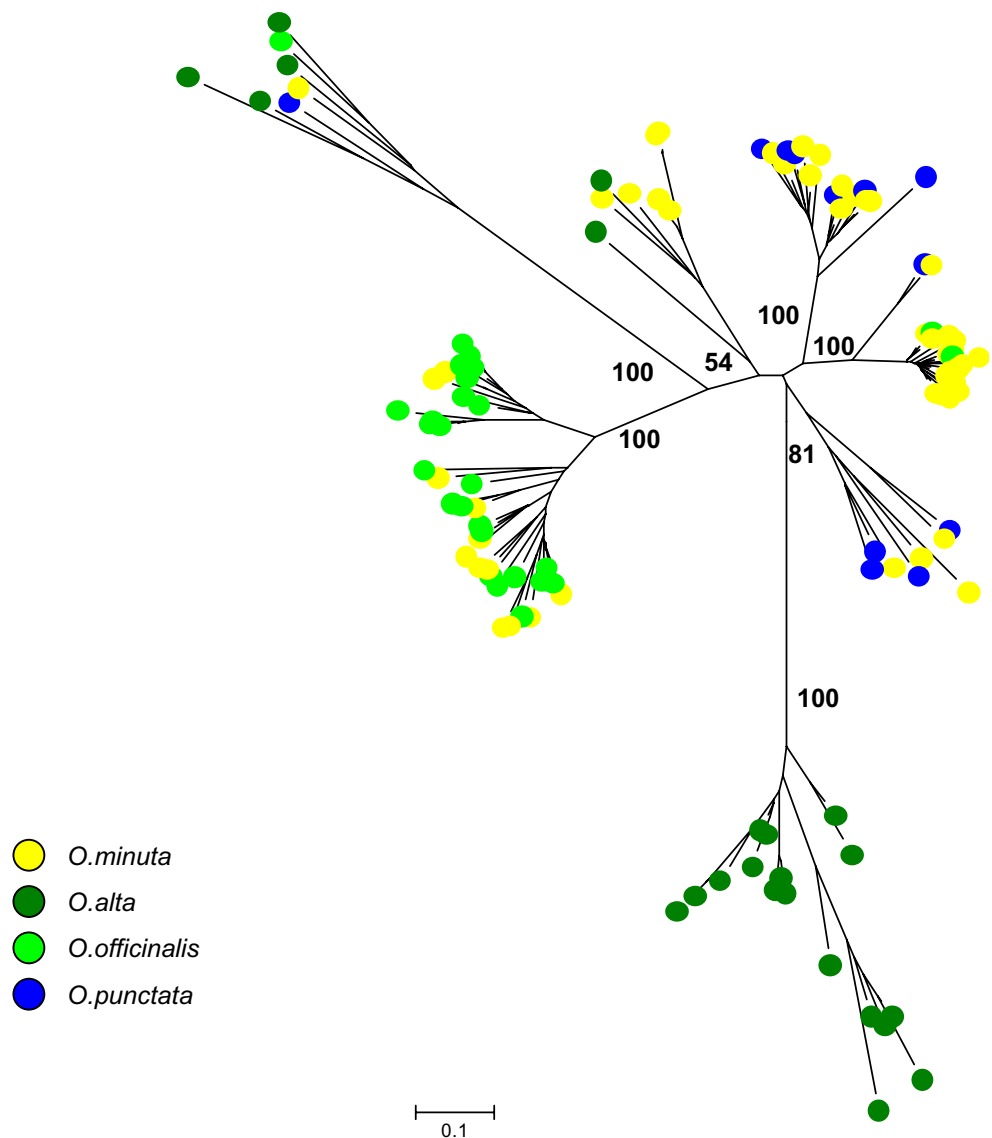
Phylogenetic relationships and variability of *Atlantys* in the *Oryza*

To investigate the phylogenetic relationship of the *Atlantys* elements in the *Oryza*, 137 paralogous *Atlantys* RT sequence domains, isolated from the random sheared libraries, were aligned and used to build a neighbor-joining

phylogenetic tree (Fig. 3). The results showed that paralogs from different genome types usually do not mix in the same clades. This observation also held true in many cases for paralogs from different species (with the exception of polyploids to be discussed later). These results indicate that proliferation of the *Atlantys* elements in the *Oryza* took place after events leading to the formation of different genome types and in many cases even after the occurrence of single speciation events.

The evolutionary history of *Atlantys* was analyzed in detail in the polyploids *O. minuta* [BBCC] and *O. alta* [CCDD] and in their diploid BB and CC genome counterparts. To obtain greater numerical power in our analysis, we investigated multiple sequence alignments between the first 5' 300 nucleotides of LTR sequences rather than using the RT sequences. The NJ tree made using *O. punctata*, *O. officinalis*, *O. minuta*, and *O. alta* *Atlantys* LTRs showed a

Fig. 4 *Atlantys* retrotransposons in BB, CC, BBCC, and CCDD genome types. LTR neighbor-joining tree. One hundred thirteen *Atlantys* LTR 5' 300 bp tracts in *O. punctata* (12), *O. officinalis* (27), *O. minuta* (51), and *O. alta* (23) were used to build a phylogenetic tree using the neighbor-joining method. Bootstrap values are based on 1,000 replicates, only those greater than 50 were reported.



constant mixing of *O. punctata* and *O. minuta* paralogs as well as of *O. officinalis* and *O. minuta* paralogs (Fig. 4). In particular, the two *O. minuta* counterparts (BB and CC) separate accordingly, mixing with *O. punctata* and *O. officinalis* elements, respectively. This topology suggests that the retrotranspositional activity of the *Atlantys* element in these species took place before the polyploidization events leading to *O. minuta*. In contrast, most of the *Atlantys* LTR sequences of *O. alta* cluster in a separate clade, thereby indicating that the retrotranspositional events happened after polyploidization leading to *O. alta* (Fig. 4). Both scenarios were also observed when RT sequences were used for phylogenetic analysis (data not shown).

Nucleotide diversity of *Atlantys* retrotransposons in different *Oryza* species was studied by analyzing the alignment of 137 *Atlantys* RT paralogs. We calculated nucleotide diversity using the Jukes–Cantor method (Pi-JC) and the average number of nucleotide differences (*K*). Pi-JC values varied from 0.09 in *O. punctata* [BB] to 0.28 in *O. coarctata* [HHKK] and the *K* parameter ranged from 40.6 in *O. granulata* [GG] to 91.9 in *O. coarctata* [HHKK]. With the exception of *O. alta*, the highest variability values were found in the polyploid species, which reflects the contribution of *Atlantys* elements from each of the two subgenomes. However, the interpopulation Pi value was greater than any of the single populations, again confirming that the timing of retrotransposition events primarily occurred after speciation (Table 4).

To investigate nucleotide diversity in greater depth, we measured Pi-JC values for 257 complete *Atlantys* LTRs (both solo-LTRs and LTRs from complete elements) identified in the *O. sativa* ssp. japonica reference sequence. High levels of diversity were observed in four regions—the 5' and 3' LTR ends, plus two internal regions as shown in Fig. 5. A similar pattern was also found for the indica subspecies reference genome sequence (data not shown).

Table 4 *Atlantys* Reverse Transcriptase Genetic Variability in the *Oryza*

Species	#	<i>T</i>	Pi (JC)	<i>K</i>
<i>O. punctata</i>	2	491	0.09082	42.000
<i>O. australiensis</i>	20	287	0.24818	59.874
<i>O. minuta</i>	24	324	0.25810	69.156
<i>O. officinalis</i>	13	339	0.21980	61.923
<i>O. coarctata</i>	6	400	0.27617	91.867
<i>O. ridleyi</i>	34	294	0.20654	52.226
<i>O. granulata</i>	11	374	0.11796	40.636
<i>O. alta</i>	26	295	0.17319	44.702
Interspecies	137	245	0.3263	63.978

Values refer to the RTs tracts used in this study

Pound symbol Total number of sequences analyzed, *T* number of total sites, *Pi-JC* estimate of nucleotide diversity according to Jukes–Cantor, *K* average number of nucleotide differences (between all pairs of sequences)

We then tried to correlate this variation with the presence of putative biological signals along the LTR sequence. A search for putative TATA boxes revealed seven positions, five of them were situated in low diversity regions, and two were located in more variable regions (Fig. 5). While it is impossible to validate the function of the putative TATA boxes in silico, it should be pointed out that the TATA box found around 400 nucleotides downstream of the 5' LTR end is highly conserved in all the 14 complete *Atlantys* LTRs isolated from the other *Oryza* species (Fig. 5).

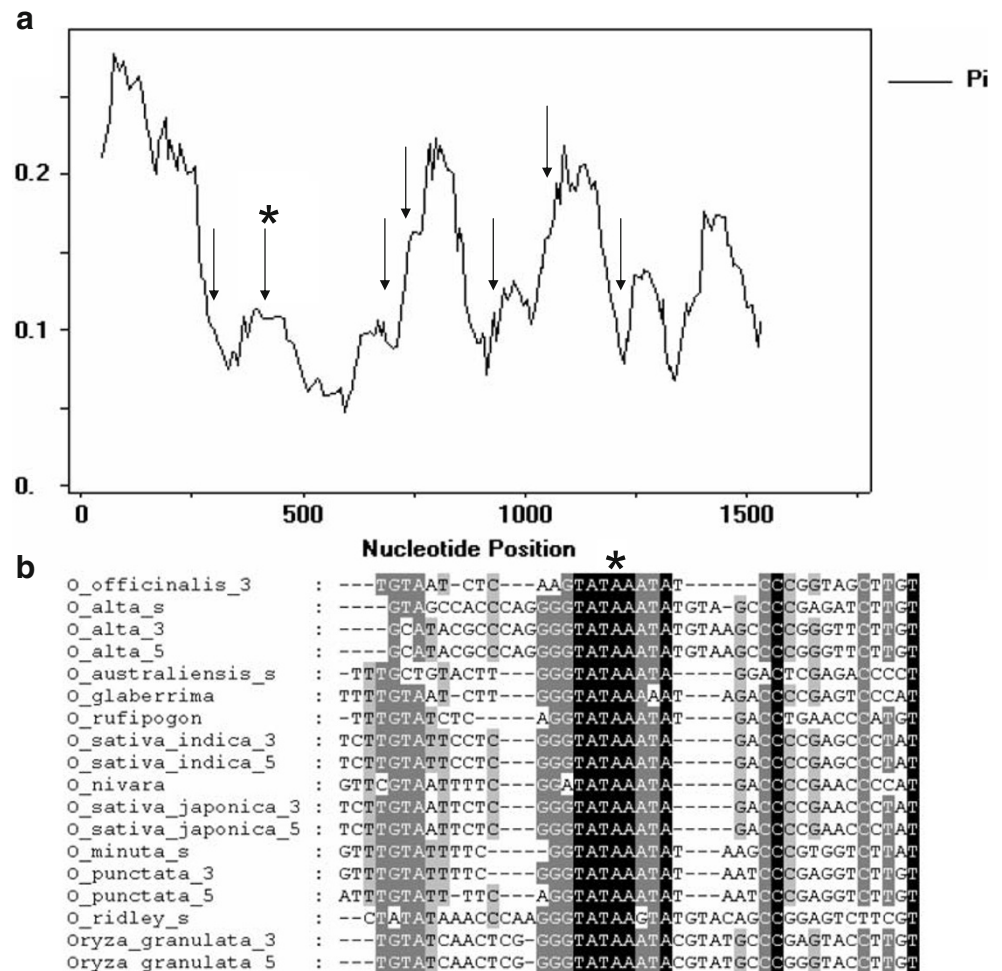
Solo-LTRs, timing of *Atlantys* retrotransposition, and removal through unequal homologous recombination

Several mechanisms have been proposed to explain the ability of an organism to counteract genome size expansion caused by LTR retroelement transposition [5] such as unequal homologous recombination at LTR sites leading to the creation of solo-LTRs. Although we could not study this mechanism in the wild relatives of rice, due to relatively short read lengths of the random sheared sequences as compared with full-length *Atlantys* elements, we were able to determine the ratio of full-length *Atlantys* elements to solo-LTRs in the *O. sativa* ssp. japonica and indica reference sequences at 1:3 and 1:5, respectively. These ratios were significantly lower from the expected ratio of 1:1.5 [31] and provided evidence that unequal homologous recombination may have played a significant role in the attenuation of *Atlantys* copy number in domesticated rice. Phylogenetic analysis of a random set of 91 LTRs from complete *Atlantys* elements and solo-LTRs from both rice subspecies could not resolve the LTRs into distinct clades suggesting that the counteracting mechanism leading to the formation of solo-LTRs was contemporary to the retrotranspositional events (Fig. 6).

Furthermore, it should be noted that many of the BACs used to identify *Atlantys* elements from the wild relatives of rice also contained solo LTRs (e.g., *O. alta*, *O. minuta*, *O. australiensis*, and *O. ridleyi*). Although the sample is limited, the presence of solo LTRs provides additional evidence that removal of complete *Atlantys* elements by unequal homologous recombination was active in other *Oryza* species.

To determine the timing of *Atlantys* element insertion into the japonica and indica genomes, we used the “genome paleontology” approach proposed by SanMiguel et al. [43] whereby mutation rates are compared for pairs of LTRs derived from complete *Atlantys* elements (51 from *O. sativa* ssp. japonica and 35 from ssp. indica) using a substitution rate 2×10^{-8} substitutions per synonymous site per year [52]. Results from both species were very similar and were therefore evaluated together. The overall majority of insertion events appear to have occurred recently in evolutionary time as more than 97% of the elements

Fig. 5 Nucleotide variation in *Atlantys* LTRs in *O. sativa*. **A** Nucleotide diversity along the *O. sativa* var. *japonica* *Atlantys* LTRs. Values on x-axis correspond to the nucleotide position on the LTR alignment. On the y-axis, values of the nucleotide diversity (Pi) measure calculated using a sliding window of 50 bp and a step of 5 bp. The positions of putative TATA boxes are indicated by arrows. **B** Detail of the *Atlantys* LTRs alignment corresponding to the putative TATA box indicated with "*" in A. _5 5' LTR, _3 3' LTR, _s solo-LTR.



inserted less than 3 million years ago (MYA) and only 2.8% inserted more than 3 MYA (Table 5). Although the sample size is small, estimates of the insertion times of *Atlantys* elements in the other *Oryza* species (Table 1) where all the insertions date back to less than 1 MYA suggest a time scale of the insertion events similar to that obtained in domesticated rice. To further support the recent retrotranspositional history of *Atlantys* elements in *Oryza*, we used blastclust (<ftp://ftp.ncbi.nih.gov/blast/documents/blastclust.html>) to cluster the 5' 300 bp *Atlantys* LTR tracts from each of the *Oryza* species individually. For many of the species that have a significant number of tracts isolated (at least 10), it was possible to find LTR tracts sharing more than 97% similarity over their complete length. In *O. alta*, five out of 23 tracts clustered; in *O. granulata*, seven out of 51 clustered; and in *O. minuta* and *O. officinalis*, 12 out of 51 and five out of 27 clustered, respectively. This degree of similarity could be roughly translated, using a molecular paleontology approach, into insertion times as recent as 1 MYA, thereby supporting the concept that the retrotranspositional history of the *Atlantys* element family in the *Oryza* is recent.

Discussion

The analysis of 12 random sheared genomic libraries representative of 12 *Oryza* species and 10 distinct genome types enabled us to gain important insights into the distribution and the evolutionary history of what appears to be one of the most significant genomic components of many *Oryza* genomes—the Ty3-Gypsy element *Atlantys*. This element was found to be ubiquitous in the *Oryza* which is not surprising since the ubiquity of LTR retrotransposons in the entire plant kingdom has been well established and the presence of the same family could easily cross the genus divide. For example, *Atlantys*-like elements have also been found in *A. thaliana* and *Lotus corniculatus* [21]. More interesting, however, is that *Atlantys* accumulated differentially across the *Oryza*. Although differential accumulation of LTR-RTs families has already been demonstrated in the *Oryza*, for Wallabi [39] and Gran3 [3] in *O. australiensis* and in *O. granulata*, respectively, *Atlantys* has attained extremely elevated copy number levels in several species but especially in the “*Officinalis* complex” [48] where it represents a significant

Fig. 6 *O. sativa* *Atlantys* LTR (from complete elements and solo-LTRs) neighbor-joining tree. Ninety-one randomly picked LTRs from both complete elements and solo-LTRs in indica and japonica *O. sativa* varieties were used to build a phylogenetic tree using the neighbor-joining method. Bootstrap values are based on 1,000 replicates, only those greater than 50 were reported.

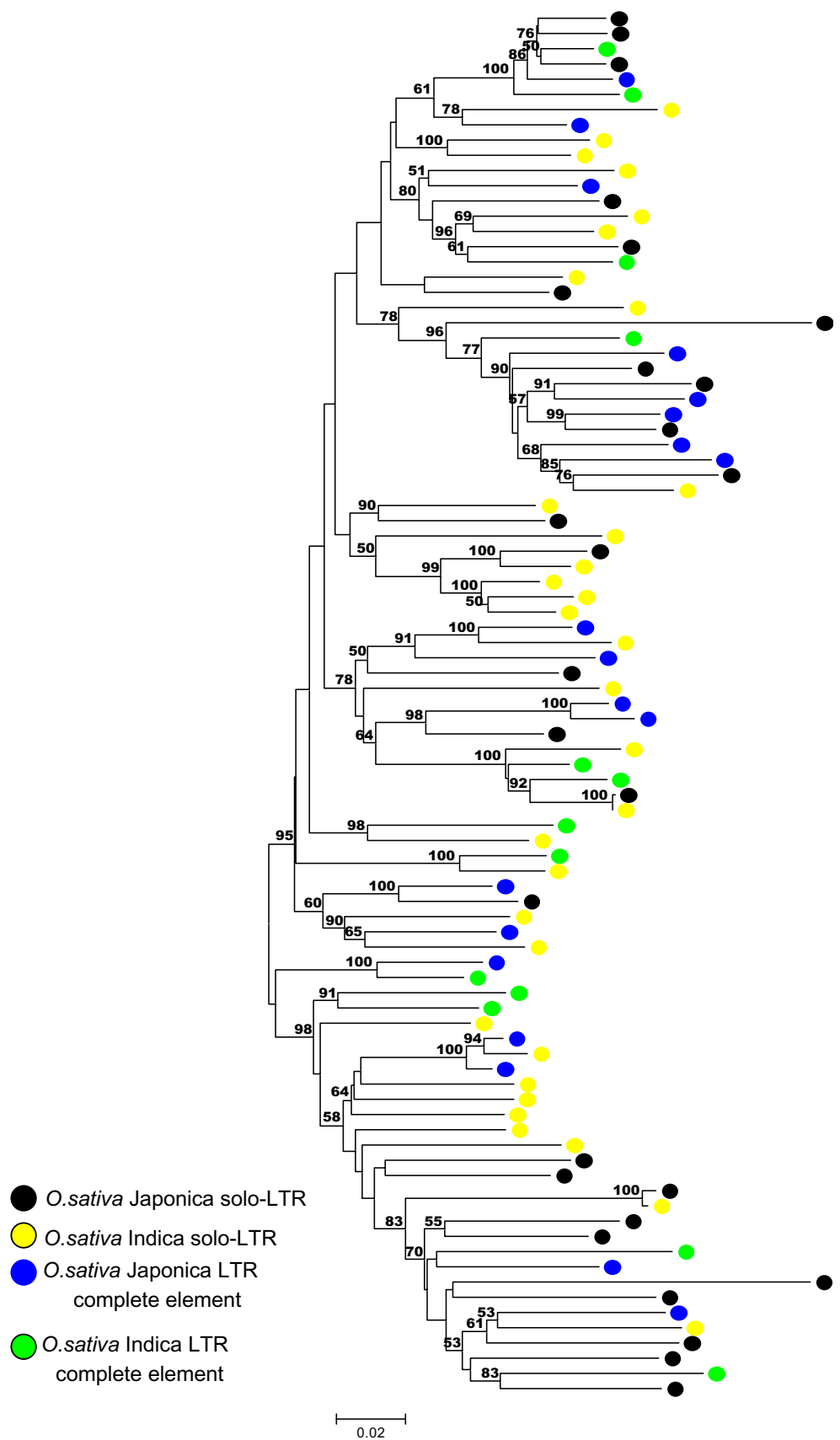


Table 5 Distribution of the Insertion Time of *Atlantys* Elements in Both Japonica and Indica Rice

MYA	Indica	Japonica	Both	%
0–1	23	44	67	77.01
1–2	9	6	16	18.39
2–3	2	0	2	2.30
>3	1	1	2	2.30

The number of occurrences for each *O. sativa* subspecies is arranged in 1 MYA bin

MYA Million of years ago, % refers to the total complete *Atlantys* occurrences in both varieties

fraction of these genomes: 8.31%, 7.90%, 7.93%, 5.93%, and 7.41% of the *O. alta* [CCDD], *O. minuta* [BBCC], *O. officinalis* [CC], *O. punctata* [BB], and *O. australiensis* [EE] genomes, respectively.

We demonstrated through phylogenetic and comparative approaches that the *Atlantys* element has proliferated rapidly in various *Oryza* genomes. In many cases, its copy number increase postdates speciation events (e.g., *O. alta*, *O. australiensis*, *O. granulata*, *O. ridleyi*, *O. coarctata*). Interesting insights into *Atlantys* proliferation dynamics were provided by the analysis of the polyploids *O. minuta* [BBCC] and *O. alta* [CCDD] and their diploid counterparts (*O. punctata* [BB] and *O. officinalis* [CC]). In *O. alta*, *Atlantys* proliferation events postdated its speciation thereby constituting an example of retrotransposition activation that could have been induced by “genomic shock” [34] during polyploidization. Some studies have indicated that *O. australiensis* [EE] is the closest living relative of the CCDD genome species; in particular, the E genome has been proposed as being related to the DD subgenome suggesting that an E genome ancestor may have played a role in the formation of CCDD tetraploids [4, 13, 54]. The *Atlantys* phylogenetic analysis does not support such a view but it is consistent with a different one which rules out the E genome as direct donor of *O. alta* [28]. However, it should be noted that our study focused on the phylogenetic history of the retrotransposon *Atlantys* and not on that of its hosts. Indeed, the lack of clustering of *Atlantys* copies of *O. australiensis* and *O. alta* could simply reflect the effects of the recent (postspeciation) retrotranspositional burst that occurred in the polyploid *O. alta* without any implication in host species phylogenetic relationships. In the polyploid, *O. minuta*, the complement of *Atlantys* retroelements seems to have been inherited from the two diploid counterparts (*O. punctata* and *O. officinalis*) or, at least, there is no evidence of any postspeciation burst. The rapidity of these events is also supported by insertion date estimates performed on complete *Atlantys* elements isolated from various *Oryza* hosts where we found that the vast majority of the events detected took place in a time frame of less than 3 million

years. However, we should not discount the effects of a bias toward younger elements due to our strategy of mainly relying on similarity searches used to isolate the *Atlantys*-like sequences and the uncertainty that is inherent with the mutation rate we used.

The mechanisms underlying the differential accumulation of *Atlantys* elements throughout the genus *Oryza* remain to be determined but are likely to have been affected by numerous factors including the effects from different genomic environments as well as different ecological conditions. Since the *Atlantys* element is ancient but its retrotranspositional history is recent in the *Oryza*, it is possible to speculate as to whether differential accumulation of *Atlantys* was the result of differential rates of transposition rather than different effectiveness of element removal or the combined results of the two forces. One of the possible removal mechanisms, i.e., unequal homologous recombination [44] was shown to have been active for *Atlantys* in almost all the species considered here, and at least in the case of *O. sativa*, it was contemporary to the retrotranspositional events. In both *O. sativa* subspecies, a large number of truncated incomplete elements were found suggesting the parallel action of illegitimate recombination [9] along with unequal homologous recombination in removing *Atlantys* elements.

Even if the *Atlantys*-like element structure is retained throughout the *Oryza*, not surprisingly their LTR sequences are quite divergent. Such evidence, coupled with the high copy number of this element, makes *Atlantys* LTRs promising candidates for the design of species-specific (or at least genome type-specific) probes. Indeed, some of the most repeated species-specific probes already isolated in *Oryza* genomes are, as a matter of fact, tracts of the *Atlantys* LTRs. This is the case for the *Hind*III repetitive element pOD3 isolated in *O. latifolia* [CCDD] [23] that shares significant similarity with *Atlantys* LTRs isolated in our analysis from *O. alta* [CCDD] (more than 77% over 1,790 bp). Interestingly, no traces of this sequence could be found in the CC genomes of *O. officinalis* [CC] or *O. minuta* [BBCC] suggesting that the pOD3 repeat is DD subgenome specific or that it proliferated only in the CCDD polyploid genomes, as our phylogenetic analysis and nucleotide diversity estimates suggest. Another genome specific example is that of probe pBO03 [24] which is part of the *Atlantys*-like element LTR from *O. officinalis* [CC]. In this case, the authors estimated a copy number for this sequence to be around 30,000 copies assuming (wrongly) that the *O. officinalis* genome size was about 900 Mbp. If the correct size (651 Mbp) is used, the estimated copy number should be ~21,700 which is in good agreement with the 16,293 figure we obtained in silico. In both cases, the authors were not able to identify these sequences as part of an LTR retroelement.

A third ORF is retained in all *Atlantys* elements isolated from the *Oryza* species. The third ORF follows the gag_pol gene but is situated on the opposite strand. This configuration eliminates the possibility that it is an envelope-like gene (in this case, it should have found in the same strand of gag_pol gene). A similar opposite strand ORF feature was found in the recently described LTR retroelement *REM-1* [38]. The third ORF conservation in the *Atlantys*-like elements isolated in very different hosts strongly suggests that it has been selectively maintained. Although few clues are available about the function of this third ORF (it is similar to a putative AA-transferase), it is tempting to speculate about its possible role in making *Atlantys* one of the most important players in *Oryza* genomes size variation by contributing to its retrotranspositional success.

According to the model proposed by Charlesworth [8], genetic divergence of RTs should be correlated with an element's abundance in a genome. This was not the case for the *Atlantys* RTs as in the case of *O. alta* where the copy number is elevated but the nucleotide variability is not. This discrepancy could be explained in the light of phylogenetic evidence that suggest a recent burst of *Atlantys* retrotransposition in this species subsequent to speciation. If the *O. alta* case is excluded, a clear relationship exists between nucleotide diversity values and polyploidy. Nucleotide diversity exhibited its highest values in polyploids which could be expected considering the contribution of at least two distinct subpopulations of *Atlantys*-like elements to these genomes. Finally, the interspecies diversity is higher than any of the intraspecies values once again pointing towards a recent time frame of retrotranspositional events.

Sequence variation was studied in depth in *Atlantys* element LTRs in both the indica and japonica subspecies of *O. sativa*. We observed a significant amount of nucleotide variation across the LTRs suggesting that there are different levels of selective pressures on these sequences, which is similar to what has been demonstrated for the LTRs of *BARE-1* [51] in barley. In particular, we found a sharp decrease of nucleotide diversity in close proximity to most of the putative TATA boxes identified in silico. One sequence was highly conserved in all the *Atlantys*-like elements throughout the genus *Oryza* and is therefore considered a strong candidate for a TATA box.

Materials and methods

Random sheared libraries

Random sheared libraries were constructed as previously described [57].

O. sativa whole genome sequences

In our analyses, we used the version 3 of the IRGSP *O. sativa* var. japonica sequence (accession numbers AP008207 to AP008218) and the Beijing Institute of Genomics *O. sativa* var. indica sequence (accession numbers CM000126.1 to CM000137.1)

Putative *Atlantys* LTRs reconstruction

For those species in which it was not possible to identify any complete *Atlantys* LTRs in the BAC sequences, the corresponding random sheared sequences were searched using BlastN and the complete *Atlantys* LTR of the closest species as query. The significant similar tracts identified were then aligned and joined to construct the putative *Atlantys* LTR.

Similarity searches

Similarity searches using *Atlantys* LTRs as queries were carried out using the BlastN algorithm [1] run under relaxed settings (-q -2 -r 3) in order to accommodate for divergence between species. Only hits having an *e* value equal or lower to $1e-10$ were used. The equation proposed by Hawkins et al. [17] was used to estimate the number of significantly similar hits present in the entire genome of each of the 12 *Oryza* species: $n = (X_{obs}/N) * (G/(L - 2m + e))$, where “Xobs” is the observed number of copies, *N* is the total number of sequence reads, *n* is number of targets in the genome, *L* is length of target sequence, *m* is estimated minimum length required to identify a sequence in a BLAST search (the extremely conservative value of 100 bp was used), *e* is number of bp sequenced from each insert and *G* is genome size. Cluster analysis was performed using “blastclust” (<ftp://ftp.ncbi.nih.gov/blast/documents/blastclust.html>) with the following settings, *L* 0.98 *S* 97, meaning that all the LTR 300 bp tracts sharing at least 97% similarity over at least 98% of their length were included in the same cluster. BlastN search results were complemented and confirmed using Repeat-Masker (www.repeatmasker.org) run under default settings.

Isolation of first 5' 300 nucleotides of LTR sequences

The first 300 bp of the 5' *Atlantys* LTRs isolated in BACs were used to search the random sheared sequences. All the positive hits spanning at least 90% of the query length (270 out of 300 bp) were extracted and used in phylogenetic analyses.

Phylogenetic analysis

All alignments were carried out using the program “MUSCLE” [10] run under default settings. Neighbor-

joining trees were produced and edited using the program MEGA (version 3) [25]. Nucleotide distances were calculated using the program DNAsp [41] and the program “Distmat” included in EMBOSS package [40]. All sequence editing was performed using the appropriate programs from the EMBOSS package.

Search for putative TATA boxes

Putative TATA boxes were identified using the program “OPROF” (<http://www.isrec.isb-sib.ch/ssa/oprof.html>) [6].

BAC sequences

The BACs used to isolate complete *Atlantys* elements and LTRs were produced and sequenced in the frame of different researches related to OMAP (www.omap.org). They are representative of 11 *Oryza* species. For each species, these are the details about the number of BACs searched, their origin and total length:

<i>O. rufipogon</i>	four BACs were sequenced from the individual with the accession ID #IRGC 105491 for a total of 545,208 bp
<i>O. glaberrima</i>	two BACs from accession ID #IRGC 96717; total bp of 268,621
<i>O. nivara</i>	two BACs from accession ID #IRGC 100897; total bp of 382,790
<i>O. punctata</i>	two BACs from accession ID #IRGC 105690; total bp of 295,593
<i>O. officinalis</i>	two BACs from accession ID #IRGC 100896; total bp of 273,319
<i>O. minuta</i>	two BACs from accession ID #IRGC 101141; total bp of 257,921
<i>O. alta</i>	two BACs from accession ID #IRGC 105143; total bp of 362,466
<i>O. australiensis</i>	three BACs from accession ID #IRGC 100882; total bp of 423,968
<i>O. ridleyi</i>	two BACs from accession ID #IRGC 100821; total bp of 352,702
<i>O. coarctata</i>	two BACs from accession ID #IRGC 104502; total bp of 360,876
<i>O. granulata</i>	four BACs from accession ID #IRGC 102118; total bp of 619,459

Accession numbers

Sequences used in this paper were submitted to the GSS division of GenBank under the following accession numbers:

Random Sheared libraries: EI028463–EI035999 (*O. alta*), EI36000–EI043358 (*O. australiensis*), EI043359–

EI046735 (*O. brachyantha*), EI46736–EI56259 (*O. coarctata*), EI056260–EI59753 (*O. glaberrima*), EI059754–EI066441 (*O. granulata*), EI066442–EI075900 (*O. minuta*), EI-075901–EI079003 (*O. nivara*), EI079004–EI083851 (*O. officinalis*), EI083852–EI86995 (*O. punctata*), EI086996–EI098086 (*O. ridleyi*), EI098087–EI100641 (*O. rufipogon*).
O. alta complete “*Atlantys*” element: EU257654
O. granulata complete “*Atlantys*” element: EU257655
O. officinalis truncated “*Atlantys*” element: EU257656
O. punctata complete “*Atlantys*” element: EU257657
O. minuta solo “*Atlantys*” LTR: EU257658
O. glaberrima joined “*Atlantys*” LTR: EU257659
O. nivara joined “*Atlantys*” LTR: EU257660
O. rufipogon joined “*Atlantys*” LTR: EU257661
O. alta solo “*Atlantys*” LTR: EU257662
O. australiensis solo “*Atlantys*” LTR: EU257663
O. ridleyi solo “*Atlantys*” LTR: EU257664
O. sativa var. Japonica complete “*Atlantys*” element: AP008212.1 from 17105002 to 17118729
O. sativa var. indica complete “*Atlantys*” element: CM000136 from 18570076 to 18583547

Acknowledgements This work was funded by the NSF Plant Genome Program award #DBI-0321678 and the Bud Antle Endowed Chair to RAW. We also thank the AGI technical staff that supported this project, especially members of the BAC/EST Resource, Sequencing, and Bioinformatics Centers.

References

- Altschul SF, Madden TL, Schaffer AA, Zhang J, Zhang Z, Miller W, et al. Gapped BLAST and PSI-BLAST: a new generation of protein database search programs. *Nucleic Acids Res.* 1997;25:3389–402.
- Ammiraju JS, Luo M, Goicoechea JL, Wang W, Kudrna D, Mueller C, et al. The *Oryza* bacterial artificial chromosome library resource: construction and analysis of 12 deep-coverage large-insert BAC libraries that represent the 10 genome types of the genus *Oryza*. *Genome Res.* 2006;16:140–7.
- Ammiraju JS, Zuccolo A, Yu Y, Song X, Piegue B, Chevalier F, et al. Evolutionary dynamics of an ancient retrotransposon family provides insights into evolution of genome size in the genus *Oryza*. *Plant J.* 2007;52:342–51.
- Bao Y, Ge S. Origin and phylogeny of *Oryza* species with the CD genome based on multiple-gene sequence data. *Plant Syst Evol.* 2004;249:55–6.
- Bennetzen JL, Ma J, Devos KM. Mechanisms of recent genome size variation in flowering plants. *Ann Bot (Lond).* 2005;95:127–32.
- Bucher P, Trifonov EN. Compilation and analysis of eukaryotic POL II promoter sequences. *Nucleic Acids Res.* 1986;14:10009–26.
- Capy P, Langin T, Higuier D, Maurer P, Bazin C. Do the integrases of LTR-retrotransposons and class II element transposases have a common ancestor? *Genetica* 1997;100:63–72.

8. Charlesworth B. Genetic divergence between transposable elements. *Genet Res.* 1986;48:111–8.
9. Devos KM, Brown JK, Jeffrey BL. Genome size reduction through illegitimate recombination counteracts genome expansion in *Arabidopsis*. *Genome Res.* 2002;12:1075–9.
10. Edgar RC. MUSCLE: multiple sequence alignment with high accuracy and high throughput. *Nucleic Acids Res.* 2004;32:1792–7.
11. Feschotte C, Jiang N, Wessler SR. Plant transposable elements: where genetics meets genomics. *Nat Rev Genet.* 2002;3:329–41.
12. Flavell AJ, Dunbar E, Anderson R, Pearce SR, Hartley R, Kumar A. Ty1-copia group retrotransposons are ubiquitous and heterogeneous in higher plants. *Nucleic Acids Res.* 1992;20:3639–44.
13. Ge S, Sang T, Lu B-R, Hong D-Y. Phylogeny of rice genomes with emphasis on origins of allotetraploid species. *Proc Natl Acad Sci U S A.* 1999;96:14400–5.
14. Goff SA. Rice as a model for cereal genomics. *Curr Opin Plant Biol.* 1999;2:86–9.
15. Goff SA, Ricke D, Lan T-H, Presting G, Wang R, Dunn M, et al. A draft sequence of the rice genome (*Oryza sativa* L. ssp. japonica). *Science* 2002;296:92–100.
16. Grandbastien M-A, Spielmann A, Caboche M. Tnt1, a mobile retroviral-like transposable element of tobacco isolated by plant cell genetics. *Nature* 1989;337:376–80.
17. Hawkins J, Kim H, Nason JD, Wing RA, Wendel JF. Differential lineage-specific amplification of transposable elements is responsible for genome size variation in *Gossypium*. *Genome Res.* 2006;16:1252–61.
18. Hirochika H, Hirochika R. Ty1-copia group retrotransposons as ubiquitous components of plant genomes. *Jpn J Genet.* 1993;68:35–46.
19. Hirochika H, Sugimoto K, Otsuki Y, Tsugawa H, Kanda M. Retrotransposons of rice involved in mutations induced by tissue culture. *Proc Natl Acad Sci U S A.* 1996;93:7783–8.
20. International Rice Genome Sequencing Project. The map-based sequence of the rice genome. *Nature* 2005;436:793–800.
21. Jurka J, Kapitonov VV, Pavlicek A, Klonowski P, Kohany O, Walichiewicz J. Repbase Update, a database of eukaryotic repetitive elements. *Cytogenet Genome Res.* 2005;110:462–7.
22. Kashkush K, Feldman M, Levy AA. Transcriptional activation of retrotransposons alters the expression of adjacent genes in wheat. *Nat Genet.* 2003;33:102–6.
23. Kiefer-Meyer M, Reddy AS, Delseny M. Characterization of a dispersed repetitive DNA sequence associated with the CCDD genome of wild rice. *Genome* 1995;38:681–8.
24. Kiefer-Meyer M, Reddy AS, Delseny M. Complex arrangement of dispersed repeated DNA sequences in *Oryza officinalis*. *Genome* 1996;39:183–90.
25. Kumar S, Tamura K, Nei M. MEGA3: integrated software for molecular evolutionary genetics analysis and sequence alignment briefings. *Bioinformatics* 2004;5:150–63.
26. Kush G. Origin, dispersal, cultivation and variation of rice. *Plant Mol Biol.* 1997;35:25–34.
27. Leprinc A-S, Grandbastien M-A, Christian M. Retrotransposons of the Tnt1B family are mobile in *Nicotiana plumbaginifolia* and can induce alternative splicing of the host gene upon insertion. *Plant Mol Biol.* 2001;47:533–41.
28. Li C-B, Zhang D-M, Ge S, Lu B-R, Hong D-Y. Differentiation and inter-genomic relationships among C, E and D genomes in the *Oryza officinalis* complex (Poaceae) as revealed by multicolor genomic in situ hybridization. *Theor Appl Genet.* 2001;103:197–203.
29. Li W, Zhang P, Fellers JP, Friebe B, Gill BS. Sequence composition, organization, and evolution of the core Triticeae genome. *Plant J.* 2004;40:500–11.
30. Lowe TM, Eddy SR. tRNAscan-SE: a program for improved detection of transfer RNA genes in genomic sequence. *Nucleic Acids Res.* 1997;25:955–64.
31. Ma J, Devos KM, Bennetzen JL. Analyses of LTR-retrotransposon structures reveal recent and rapid genomic DNA loss in rice. *Genome Res.* 2004;14:860–9.
32. Martinez CP, Arumuganathan K, Kikuchi H, Earle ED. Nuclear DNA content of ten rice species as determined by flow cytometry. *Jpn J Genet.* 1994;69:513–23.
33. McCarthy EM, Liu J, Lizhi G, McDonald JF. Long terminal repeat retrotransposons of *Oryza sativa*. *Genome Biol.* 2002;3:RESEARCH0053.
34. McClintock B. The significance of responses of the genome to challenge. *Science* 1984;226:792–801.
35. Meyers BC, Tingey SV, Morgante M. Abundance, distribution, and transcriptional activity of repetitive elements in the maize genome. *Genome Res.* 2001;11:1660–76.
36. Neumann P, Koblikova A, Navratilova A, Macas J. Significant expansion of *Vicia pannonica* genome size mediated by amplification of a single type of giant retroelement. *Genetics* 2006;173:1047–56.
37. Neumann P, Pozarkova D, Macas J. Highly abundant pea LTR retrotransposon Ogr is constitutively transcribed and partially spliced. *Plant Mol Biol.* 2003;53:399–410.
38. Perez-Alegre M, Dubus A, Fernandez E. REM1, a new type of long terminal repeat retrotransposon in *Chlamydomonas reinhardtii*. *Mol Cell Biol.* 2005;25:10628–38.
39. Piegu B, Guyot R, Picault N, Roulin A, Saniyal A, Kim H, et al. Doubling genome size without polyploidization: dynamics of retrotransposition-driven genomic expansions in *Oryza australiensis*, a wild relative of rice. *Genome Res.* 2006;16:1262–9.
40. Rice P, Longden I, Bleasby A. EMBOSS: The European Molecular Biology Open Software Suite. *Trends Genet.* 2000;16:276–7.
41. Rozas J, Sanchez-DelBarrio JC, Messeguer X, Rozas R. DnaSP, DNA polymorphism analyses by the coalescent and other methods. *Bioinformatics* 2003;19:2496–7.
42. SanMiguel P, Bennetzen JL. Evidence that a recent increase in maize genome size was caused by the massive amplification of intergene retrotransposons. *Ann Bot.* 1998;82(supplement A):37–44.
43. SanMiguel P, Gaut BS, Tikhonov A, Nakajima Y, Bennetzen JL. The paleontology of intergene retrotransposons of maize. *Nat Genet.* 1998;20:43–5.
44. Shirasu K, Schulman AH, Lahaye T, Schulze-Lefert P. A contiguous 66-kb barley DNA sequence provides evidence for reversible genome expansion. *Genome Res.* 2000;10:908–15.
45. Suoniemi A, Tanskanen J, Schulman AH. *Gypsy*-like retrotransposons are widespread in the plant kingdom. *Plant J.* 1998;13:699–705.
46. Suoniemi A, Ananthawat-Jonsson K, Arna T, Schulman AH. Retrotransposon BARE-1 is a major, dispersed component of the barley (*Hordeum vulgare* L.) genome. *Plant Mol Biol.* 1996;30:1321–9.
47. Suoniemi A, Narvanto A, Schulman AH. The BARE-1 retrotransposon is transcribed in barley from an LTR promoter active in transient assays. *Plant Mol Biol.* 1996;31:295–306.
48. Tateoka T. Taxonomic studies of *Oryza* II. Several species complexes. *Bot Mag Tokyo.* 1962;1:165–73.
49. Varagona MJ, Purugganan M, Wessler SR. Alternative splicing induced by insertion of retrotransposons into the maize waxy gene. *Plant Cell.* 1992 ;4:811–20.

50. Vaughan DA, Morishima H, Kadowaki K-I. Diversity in the *Oryza* genus. *Curr Opin Plant Biol.* 2003;6:139–46.
51. Vicient CM, Kalendar R, Schulman AH. Variability, recombination, and mosaic evolution of the barley BARE-1 retrotransposon. *J Mol Evol.* 2005;61:275–91.
52. Vitte C, Ishii T, Lamy F, Brar DS, Panaud O. Genomic paleontology provides evidence for two distinct origins of Asian rice (*Oryza sativa*, L.). *Mol Genet Genomics.* 2004;272:504–11.
53. Voytas DF, Cummings MP, Koniczny A, Ausubel FM, Rodermel SR. Copia-like retrotransposons are ubiquitous among plants. *Proc Natl Acad Sci U S A.* 1992;89:7124–8.
54. Wang Z-Y, Second G, Tanksley SD. Polymorphism and phylogenetic relationships among species in the genus *Oryza* as determined by analysis of nuclear RFLPs. *Theor Appl Genet.* 1992;83:565–81.
55. Wing RA, Ammiraju JS, Luo M, Kim H, Yu Y, Kudrna D, et al. The *Oryza* map alignment project: the golden path to unlocking the genetic potential of wild rice species. *Plant Mol Biol.* 2005;59:53–62.
56. Yu J, Hu S, Wang J, Wong GK, Li S, Liu B, et al. A draft sequence of the rice genome (*Oryza sativa* L. ssp. indica). *Science* 2002;296:79–92.
57. Zuccolo A, Sebastian A, Talag J, Yu Y, Kim H, Collura K, et al. Transposable element distribution, abundance and role in genome size variation in the genus *Oryza*. *BMC Evol Biol.* 2007;7(1):152.